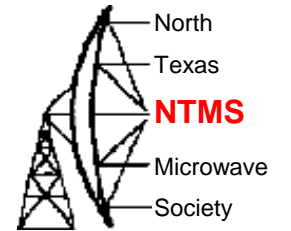


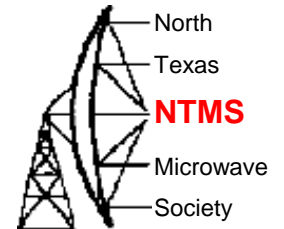
W5HN



Recent SDR Projects

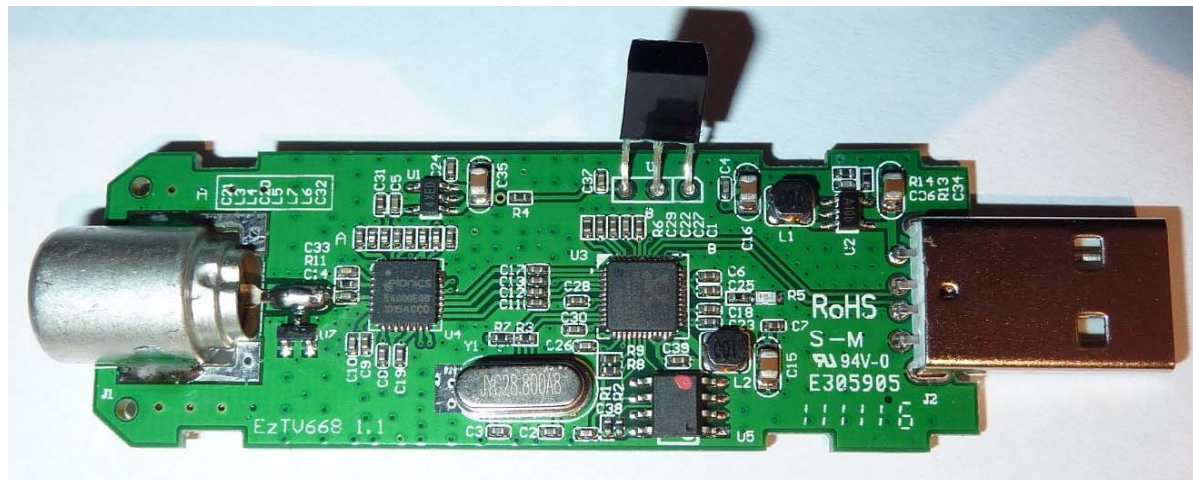
Dave Robinson WW2R

DTV USB Dongles for Hams?



I first came across them on the G4VXE blog

For \$22 it was worth a try!

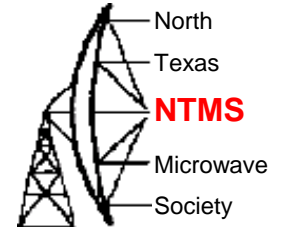


e

Someone reverse engineered them to make them into an SDR

Mine has OCX antenna connector. Same as used on some GPS so adaptor cables are available

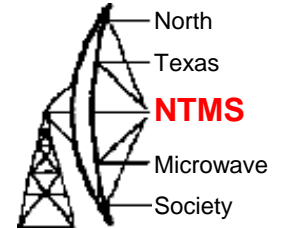
Not all are the same... Check!



Tuner	Frequency range
Elonics E4000	52 - 2200 MHz with a gap from 1100 MHz to 1250 MHz *
Rafael Micro R820T	24 - 1766 MHz*
Fitipower FC0013	22 - 1100 MHz (FC0013B/C, FC0013G has a separate L-band input, which is unconnected on most sticks)
Fitipower FC0012	22 - 948.6 MHz
FCI FC2580	146 - 308 MHz and 438 - 924 MHz (gap in between)

RTL2832 Decodes TV signals

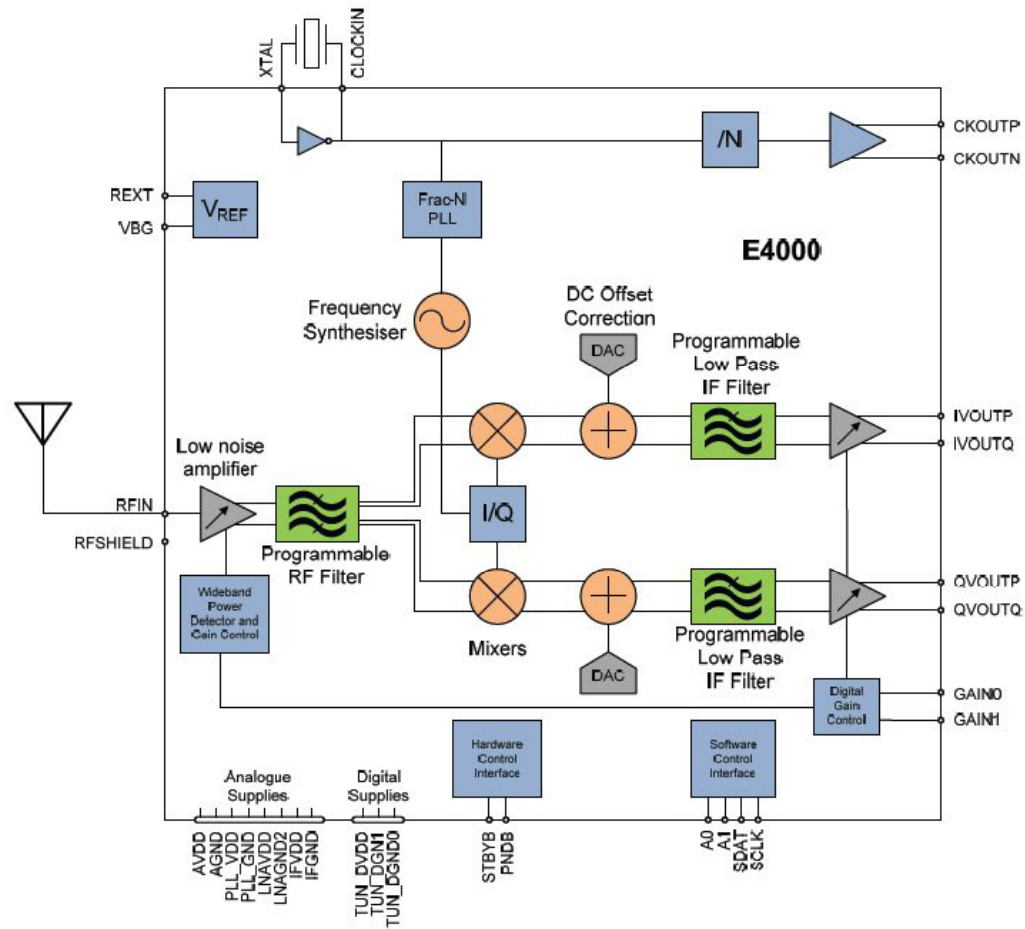
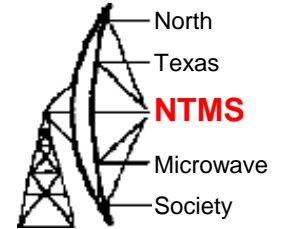
Sensitivity NBFM 12.5kHz b/w



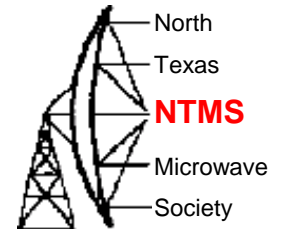
Frequency	Sensitivity (NBFM)
70.4000 MHz	-112dBm
101.1000 MHz	-116dBm
121.1000 MHz	-119dBm
145.2000 MHz	-114dBm
168.5000 MHz	-114dBm
432.2000 MHz	-119dBm
458.0000 MHz	-115dBm
1050.0000 MHz	-116dBm

Not brilliant but works OK for \$22. It does have front end filtering

E4000 Block Diagram

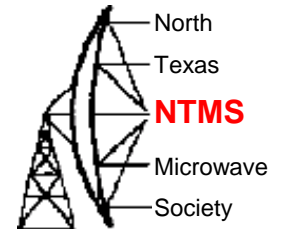


What can they be used for?



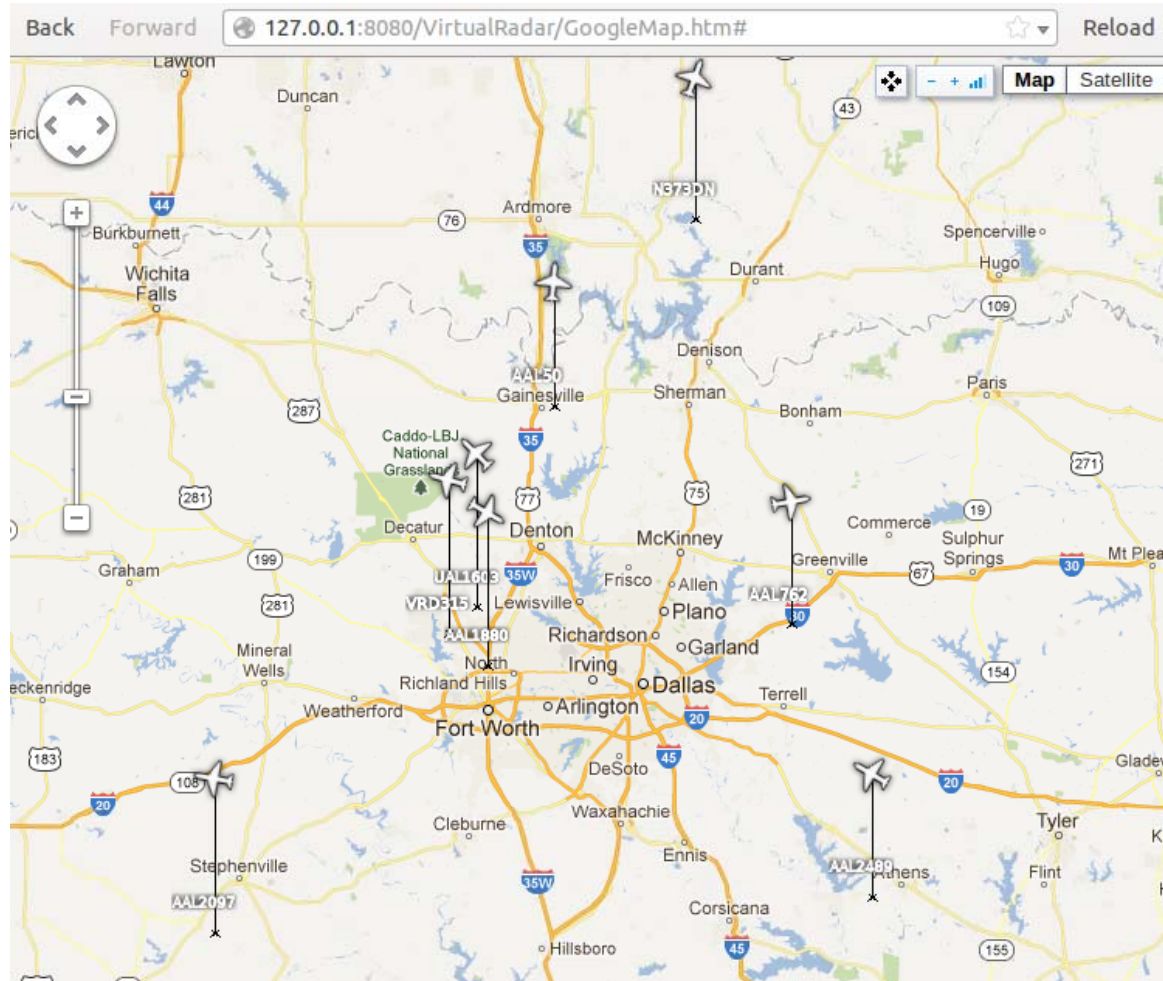
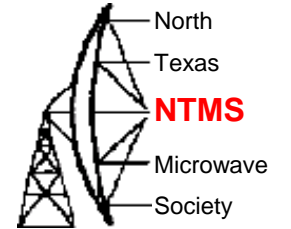
1. Monitor/Scan local repeaters 144/220/432/902
2. Monitor local beacons 144/220/432/902
3. Use as a Panadaptor for Microwave IF (144MHz)
4. Decode ADSB and find aircraft scatter targets (1090MHz)
5. GPS receiver (covers ~1500MHz)
6. (UK) Watch TV when bands close!

Available Software

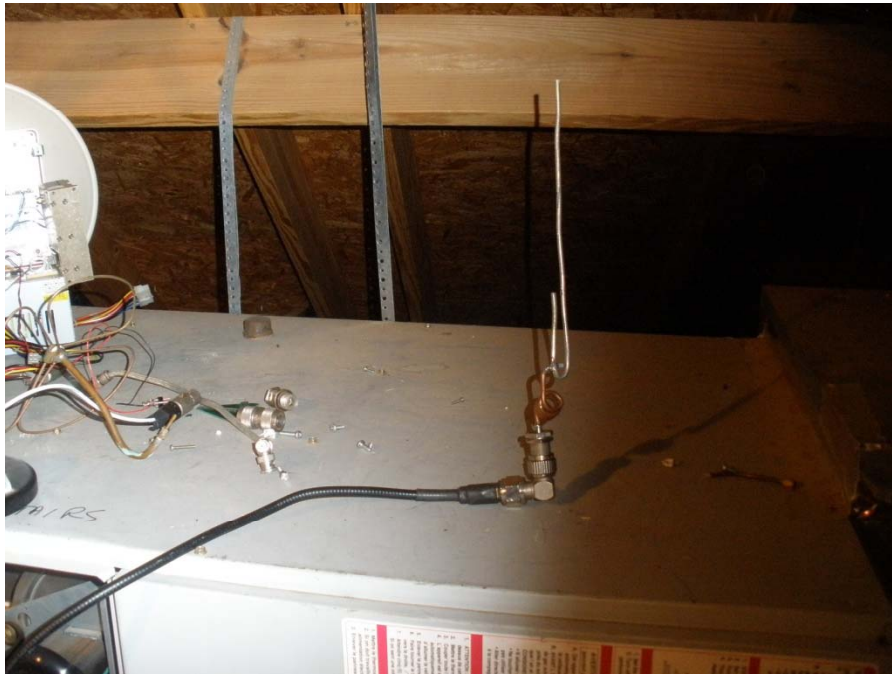
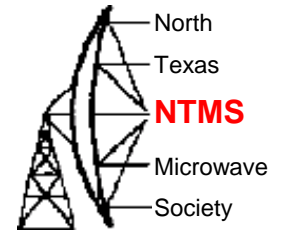


Name	Type
gr-pocsag	GRC Flowgraph
multimode RX (try first!)	GRC Flowgraph
simple_fm_rvc	GRC Flowgraph
python-librtlsdr	Python Wrapper
pyrtlsdr	Python Wrapper
rtlsdr-waterfall	Python FFT GUI
Wireless Temp. Sensor RX	Gnuradio App
QtRadio	SDR GUI
gqrx (fork)	SDR GUI
rtl_fm	SDR CLI
SDR#	SDR GUI
tetra_demod_fft	Trunking RX
gqrx (original)	SDR GUI
airprobe	GSM sniffer
gr-smartnet (WIP)	Trunking RX
gr-air-modes	ADS-B RX
Linrad	SDR GUI
gr-ais (fork)	AIS RX
GNSS-SDR	GPS RX (Realtime!)
LTE-Cell-Scanner (NEW)	LTE Scanner / Tracker
Simulink-RTL-SDR (NEW)	MATLAB/Simulink wrapper
gr-scan (NEW)	Scanner
kalibrate-rtl (NEW)	calibration tool
pocsag-mrt (NEW)	Multichannel Realtime Decoder

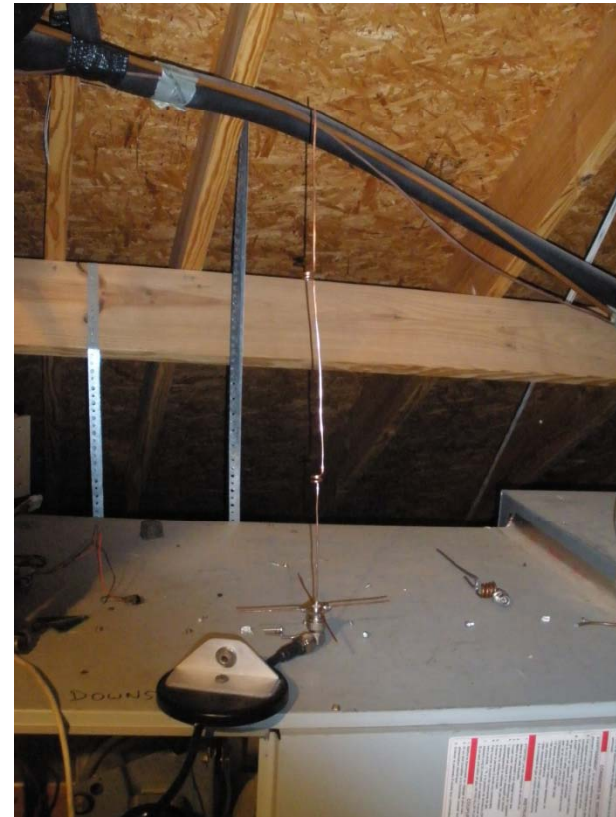
RTL2832U/E4000 Dallas



ADSB Loft Antenna

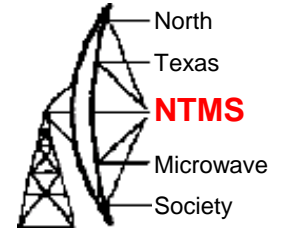


J pole. 2 pieces semi-rigid



Co-linear 14AWG cable

Next Version



Of course they soon sold out!. Recently another version has become available I got one for \$18!

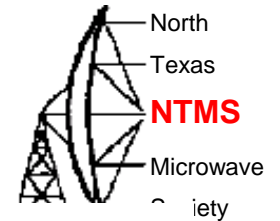
Rafael Micro R820T tuner

Covers 24-1700MHz so can be used as a 28MHz pan adaptor

More sensitive than RTL2832 tuner

R820T/E4000

R820T



Features

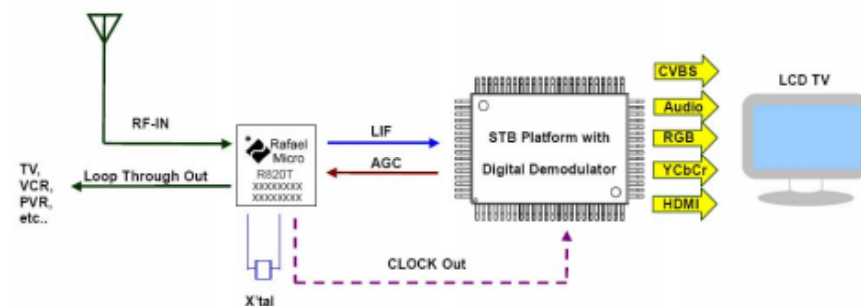
- Support all digital TV standards: DVB-T, ATSC, DTMB, IRIB and ISDB-T.
- Lowest BOM cost WITHOUT external SAW filters, LNA, balun, LDO, and adjustable parts.
- Low cost Single-In Digital TV Application
- Compliant with EN 300 744, Nordig 2.2, D-BOOK 7.0, ARIB B21, ABNT 15604, ATSC A74 and GB20600-2006
- Compliant with EN-55020, EN55013 and FCC
- Ultra low power consumption < 190mA
- Single power supply with 3.3V
- 2-wired I2C interface
- 24-pin 4x4 QFN lead-free package

Applications

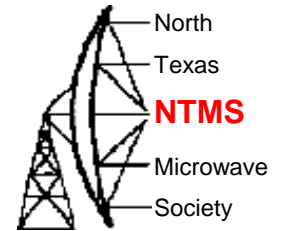
- Terrestrial Digital TV
- Desktop/Laptop PCTV, Mini-card, and USB peripherals
- Set Top Box
- Portable Media Player



Universal
DTV

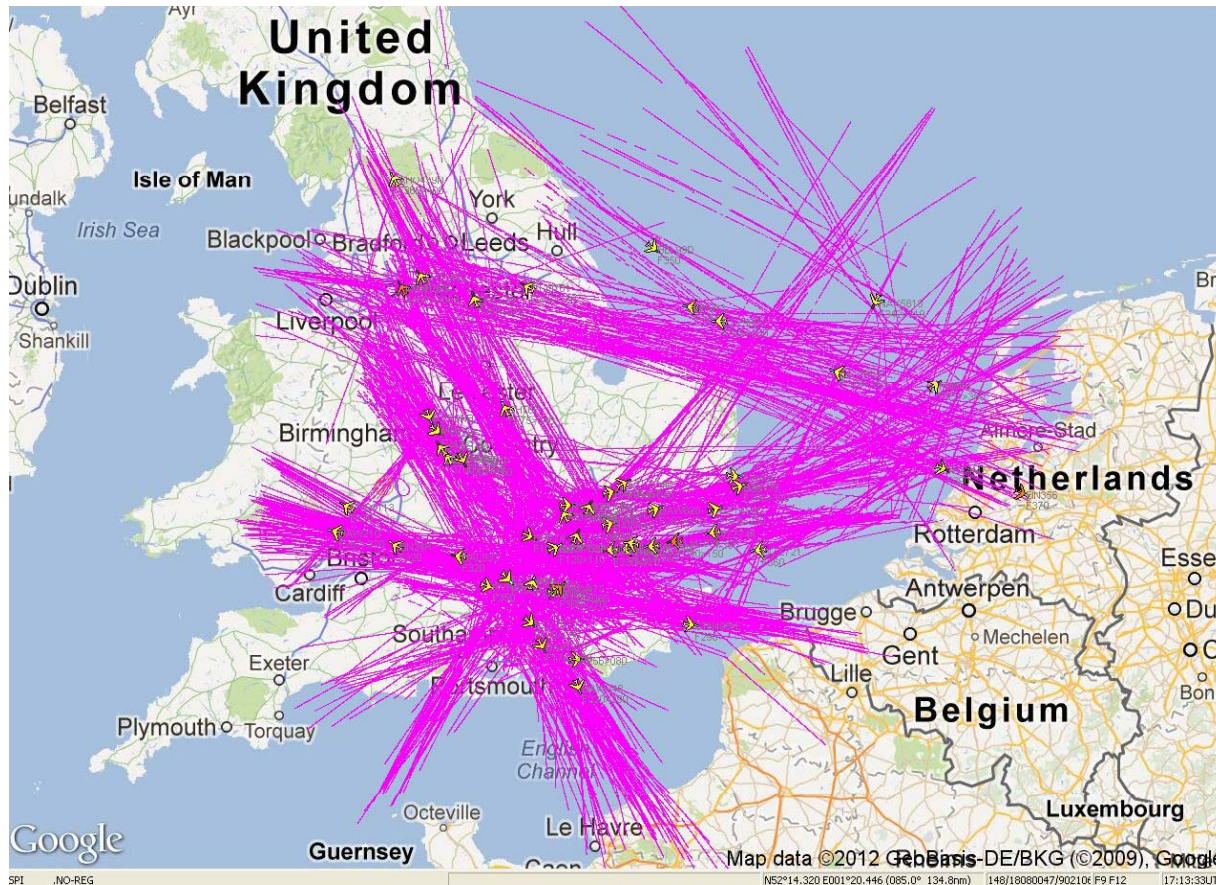
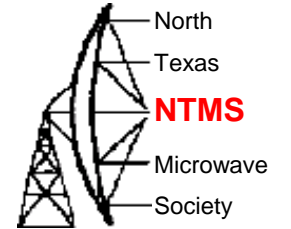


DL4MEA ModeS beast



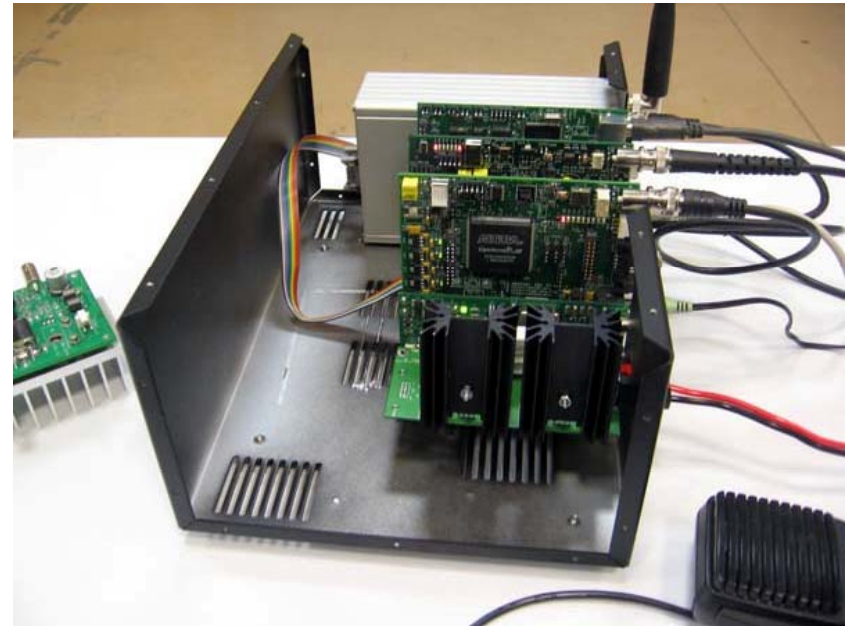
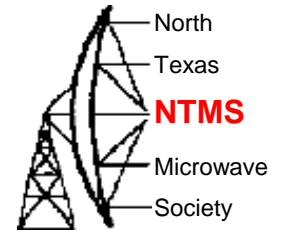
Down converter plus FPGA

ModeS beast



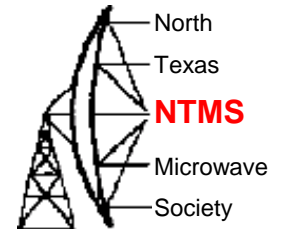
Indoor co-linear antenna on window sill

HPSDR



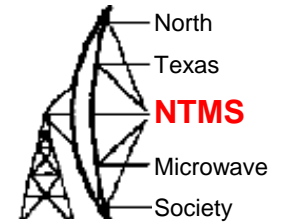
RX Board + TX Board + Ethernet board + RX filter board + TX filter board!

Anan-10

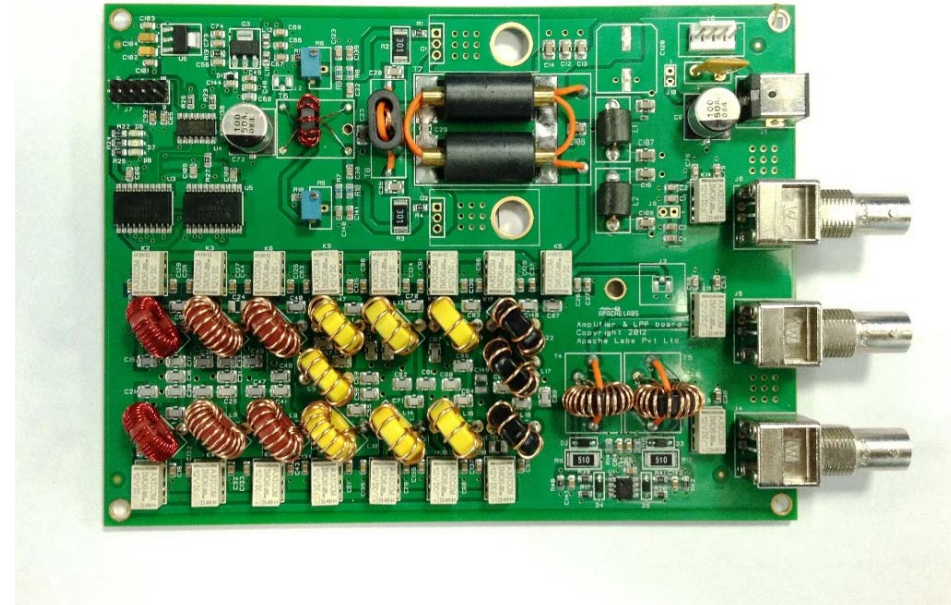


- 100kHz thro 6m
- 10W+ output
- GigE Interface
- Transverter Output

Anan-10

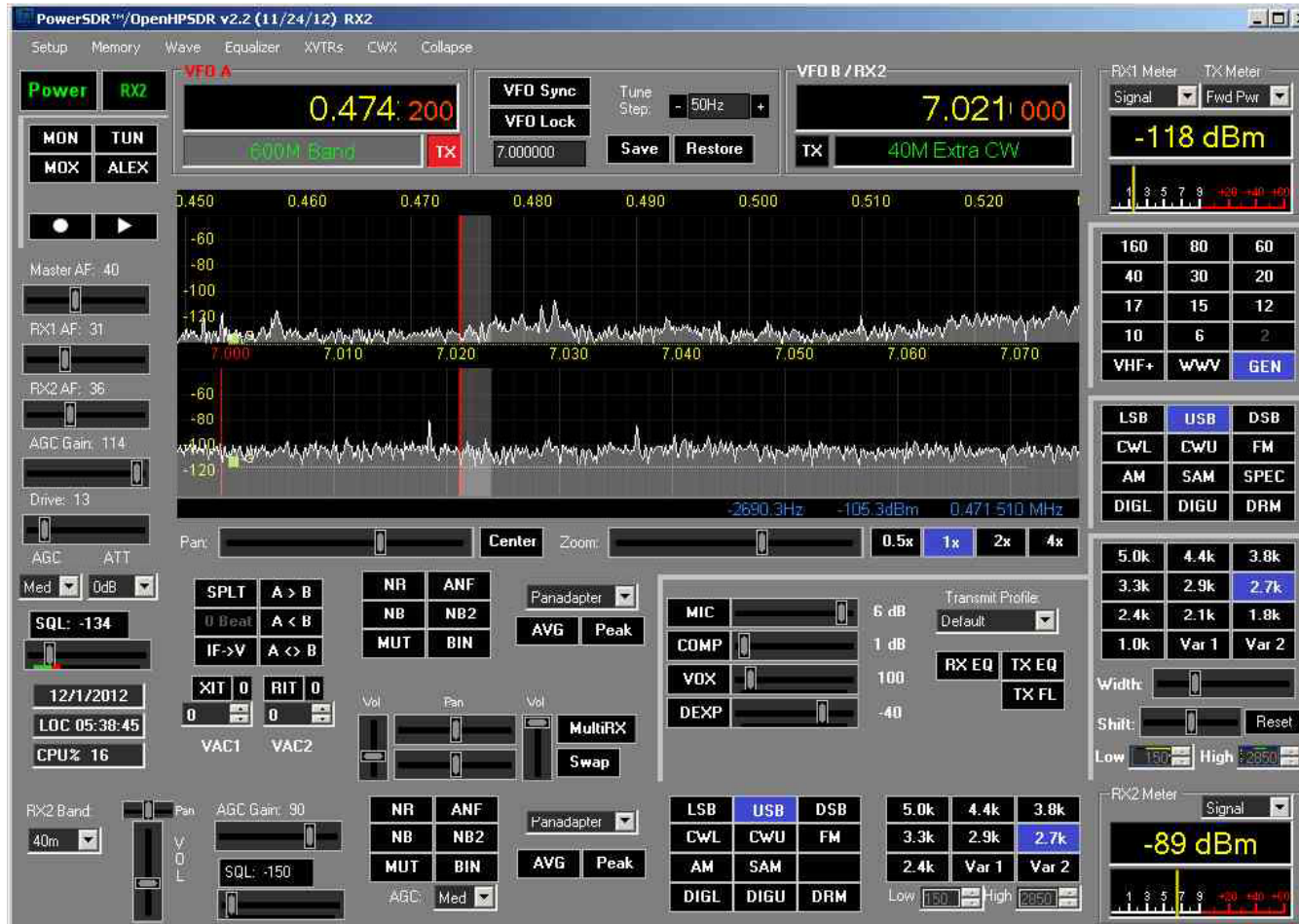
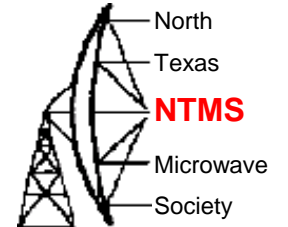


RX+TX+Ethernet



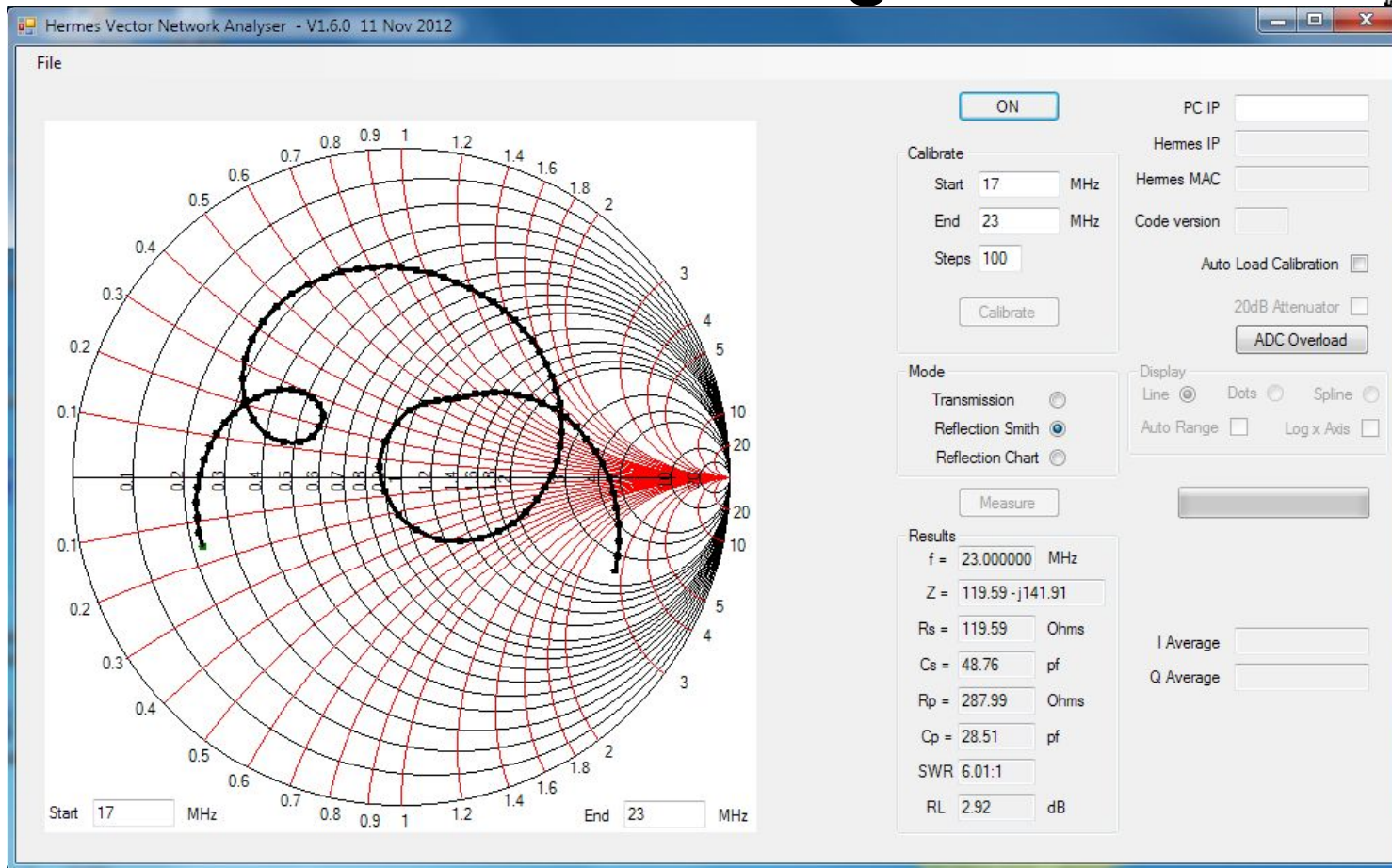
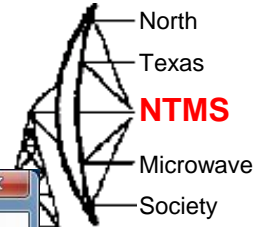
PA/Filters

Dual receiver W5WC



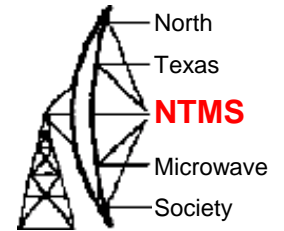
Rx covers 50+ MHz so can monitor LF & 40m

VNA Usage



Software by VK6APH

More Information



- G4VXE Blog: <http://g4vxe.blogspot.co.uk/>
- Windows guide to USB dongle install <http://www.m9t.co.uk/>
- Windows software <http://rtlsdr.org/softwarewindows>
- Linux software <http://sdr.osmocom.org/trac/wiki/rtl-sdr>
- Hermes: <http://openhpsdr.org/wiki/index.php?title=HERMES>
- Anan: <https://apache-labs.com/>
- VNA: <http://openhpsdr.org/wiki/index.php?title=VNA>